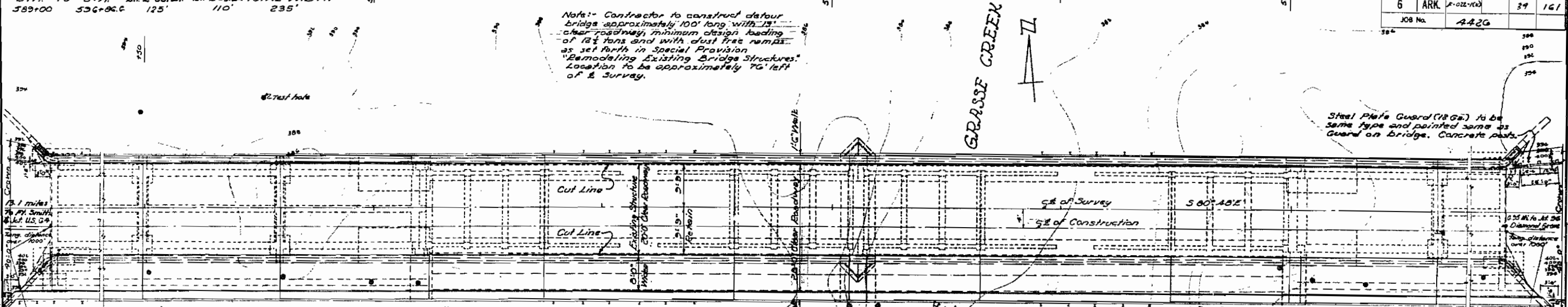


RIGHT OF WAY DATA
 STA. TO STA. LT. & CONST. RT. & CONST. TOTAL WIDTH
 589+00 536+96.6 125' 110' 235'

FED. ROAD No.	STATE	FED. AID PROJECT	FISCAL YEAR	SHEET No.	TOTAL SHEETS
6	ARK.	A-022-100		39	161
JOB No.		442G			

Note: Contractor to construct detour bridge approximately 100' long with 12' clear roadway, minimum design loading of 12 tons and with dust free ramps as set forth in Special Provision "Remodeling Existing Bridge Structures." Location to be approximately 70' left of E. Survey.



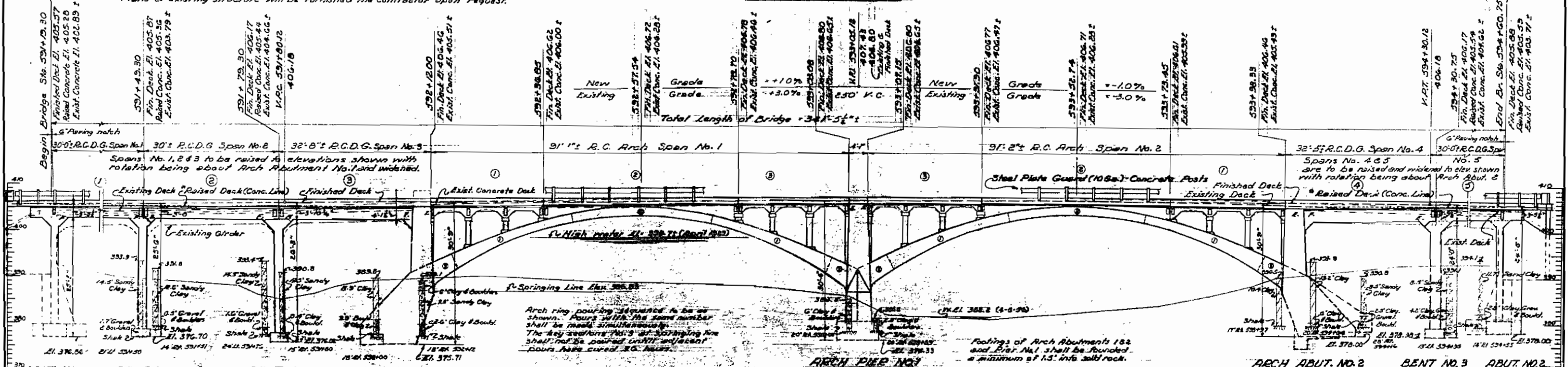
GENERAL NOTES

All concrete to be poured in the dry. Exposed corners chamfered 1/4" unless otherwise noted.
 Rock excavation to be made to neat lines of concrete footings. Care shall be exercised to avoid shattering of rock faces by excessive blasting. Concrete in footings to be poured against excavated surfaces of rock.
 Construction joints in abutments, bents and pier shall be horizontal and provided with keys not less than 3" high covering the middle third of both dimensions. The Contractor shall remodel the existing bridge and maintain traffic throughout the construction period. See Special Provisions.
 Plans of existing structure will be furnished the Contractor upon request.

GENERAL NOTES (CONT)

For Details of Remodeling Substructure, see Dwg. Nos. 9253 to 9257
 For Details of Remodeling Superstructure, see Dwg. Nos. 9258 to 9262
 SPECIFICATIONS: Arkansas State Highway Commission Standard Specifications for Road and Bridge Construction adopted March 1, 1940.

PLAN



ELEVATION

DESIGN SPECIFICATIONS A.S.H.O. 1953

LIVE LOADING	H-20
UNIT STRESSES:	
Class A Concrete (f' _c)	3400 psi
Class S Concrete (f' _c)	1200 psi
Reinforcing Steel	20,000 psi

LAYOUT OF BRIDGE OVER BIG VACHE GRASSE CREEK
 CAMP CHAFFEE - FRANKLIN COUNTY LINE RECONSTR.
 SEBASTIAN COUNTY

ROUTE 22 SEC. 1
 ARKANSAS STATE HIGHWAY COMMISSION
 LITTLE ROCK, ARK.

DRAWN BY: J.E.M. DATE: 7-22-54
 CHECKED BY: J.E.M. DATE: 8-6-54
 BRIDGE NO. 349A DRAWING NO. 9252

L.P. Carlson
 BRIDGE DESIGN ENGINEER

FED. ROAD No.	STATE	FED. AID PROJECT	FISCAL YEAR	SHEET No.	TOTAL SHEETS
6	ARK.	1022-1021		93	161
JOB No.		4-22G			

SCHEDULE OF BRIDGE QUANTITIES

BRIDGE NO. C.C.F. NO.	ITEM NO. ITEM	UNIT OF BRIDGE										REMODELING EXISTING BRIDGE STRUCTURES	COMPLETE ITEM
		103 DRY EXCAVATION FOR STRUCTURES	103 WET EXCAVATION FOR STRUCTURES	103 SOLID ROCK EXCAVATION FOR STRUCTURES	SP & 802 CLASS A CONCRETE FOR BRIDGES	SP & 802 CLASS 3 CONCRETE FOR BRIDGES	SP & 803 REINFORCING STEEL	SP-805-G STEEL PLATE GUARD (10 GA.)	807 STRUCTURAL STEEL IN BEAM SPANS	823 BRIDGE NAME PLATES (TYPE C)	SP		
	UNITS	CU. YD.	CU. YD.	CU. YD.	CU. YD.	CU. YD.	LB.	LIN. FT.	LB.	EACH			
3061 X031	Abutments No. 1 & 2	33	144	-	46.50	-	4832	-	-	-	-	-	
	One 37'7" I-Beam Span	-	-	-	-	14.95	2513	-	12348	1	-	-	
	Totals for Bridge No. 3061	33	144	-	46.50	14.95	7345	-	12348	1	5%	-	
3062 X031	Abutments No. 1 & 2	49	142	2	45.12	-	4718	-	-	-	-	-	
	One 33'11" I-Beam Span	-	-	-	-	13.46	2431	-	11010	1	-	-	
	Totals for Bridge No. 3062	49	142	2	45.12	13.46	7149	-	11010	1	4%	-	
349A X024	Abutments No. 1 & 2	52	13	4	28.17	-	3147	-	-	-	-	-	
	Bents No. 1 & 3	43	12	4	17.60	-	1932	-	-	-	-	-	
	Bent No. 2	18	13	1	8.64	-	1033	-	-	-	-	-	
	Arch Abutment No. 1	51	30	6	48.43	-	2169	-	-	-	-	-	
	Pier No. 1	11	20	9	33.31	2.98	3251	8.17	-	-	-	-	
	Arch Abutment No. 2	59	12	8	41.64	-	2014	-	-	-	-	-	
	30'-0" R.C.D. Girder Spans No. 1 & 5	-	-	-	-	44.03	5631	145.42	-	1	-	-	
	30'-0" R.C.D. Girder Span No. 2	-	-	-	-	18.40	2474	60.00	177	-	-	-	
	32'-8" R.C.D. Girder Span No. 3	-	-	-	-	19.75	2690	65.34	-	-	-	-	
	32'-5" R.C.D. Girder Span No. 4	-	-	-	-	18.92	2692	64.84	177	-	-	-	
	91'-1" R.C. Arch Span No. 1	-	-	-	27.67	44.54	11670	182.17	278	-	-	-	
91'-2" R.C. Arch Span No. 2	-	-	-	27.67	46.57	11689	182.33	278	-	-	-		
Totals for Bridge No. 349A	234	100	32	233.13	137.99	50392	708.27	910	1	70%	-		
348A X024	Abutment No. 1	5	-	-	0.94	-	62	-	-	-	-	-	
	Arch. Abutment No. 1	57	3	12	41.06	-	2093	-	-	-	-	-	
	Arch. Abutment No. 2	53	34	9	58.55	-	2580	-	-	-	-	-	
	Bents No. 1, 2, & 3	42	20	3	20.15	-	1975	-	-	-	-	-	
	Abutment No. 2	32	5	1	8.60	-	674	-	-	-	-	-	
	32'-0" R.C.D. Girder Span No. 1	-	-	-	-	16.52	2871	78.18	125	1	-	-	
	102'-4" R.C. Arch Span No. 2	-	-	-	32.35	38.85	11853	204.67	697	-	-	-	
	32'-0" R.C.D. Girder Span No. 3	-	-	-	-	14.46	2298	65.00	233	-	-	-	
	30'-0" R.C.D. Girder Span No. 4	-	-	-	-	13.46	2124	60.00	106	-	-	-	
	30'-1" R.C.D. Girder Span No. 5	-	-	-	-	13.50	2124	60.18	125	-	-	-	
	29'-11" R.C.D. Girder Span No. 6	-	-	-	-	16.31	2460	74.00	106	-	-	-	
Totals for Bridge No. 348A	189	62	25	162.25	113.10	31114	542.03	1352	1	21%	-		
Totals for Job No. 442G		505	448	59	487.0	339.5	96000	1250.3	25660	4	100%	-	

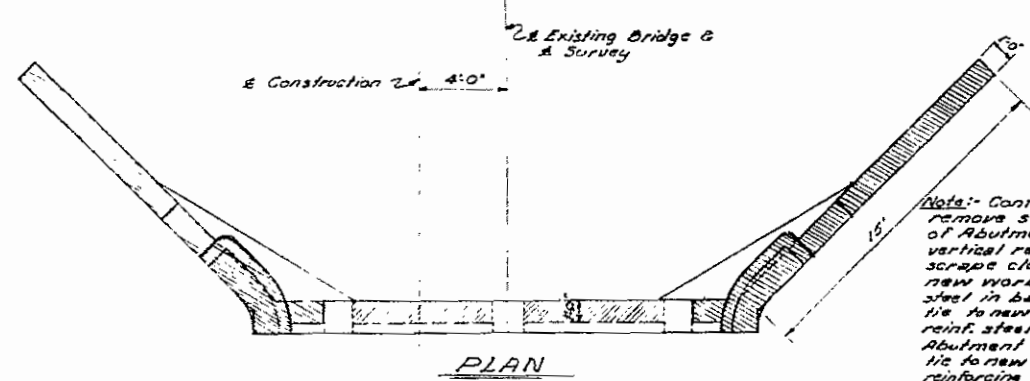
SCHEDULE OF BRIDGE QUANTITIES
 CAMP CHAFFEE - FRANKLIN COUNTY LINE
 RECONSTRUCTION
 SEBASTIAN COUNTY
 ROUTE 22 SEC. 1

ARKANSAS STATE HIGHWAY COMMISSION
 LITTLE ROCK, ARK.

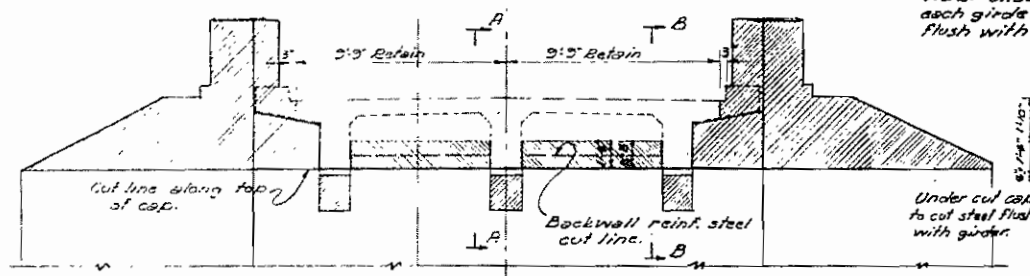
DRAWN BY: J.E.H. DATE: 12-4-26
 CHECKED BY: J.E.M. DATE: 12-15-26
 BRIDGE NO. 3061, 3062, 348A, 349A
 DRAWING NO. 3245

L.P. Carlson
 BRIDGE DESIGN ENGINEER

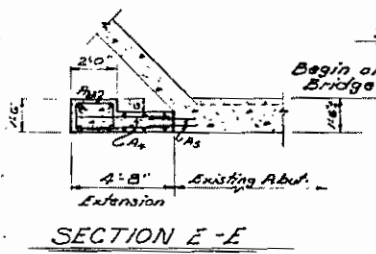
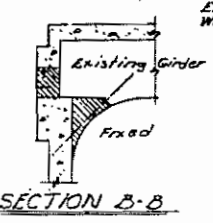
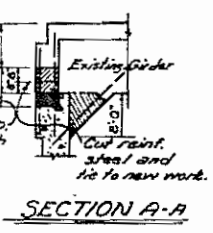
FED. ROAD No.	STATE	FED. AID DISTRICT	FISCAL YEAR	SHEET No.	TOTAL SHEETS
6	ARK.	F-022-1021	20	161	
JOB No.		4426			



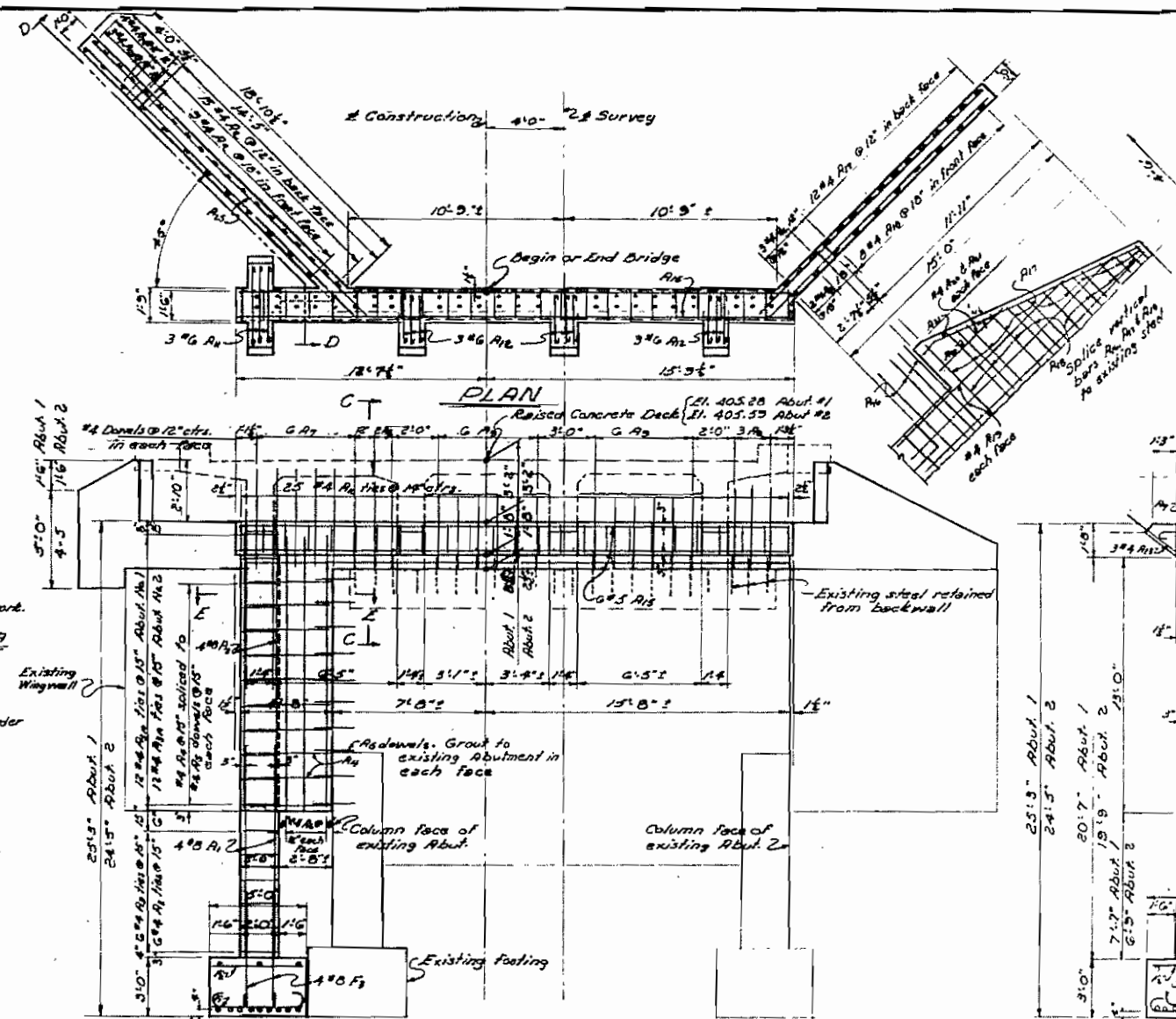
Note: Contractor to remove shaded portions of Abutment. Obtain vertical reinforcing steel, scrape clean and tie to new work. Cut reinf. steel in backwall, as shown, tie to new haunch. All reinforcing steel to be cut that extends out of new work. Under cut cap under each girder and cut steel flush with bottom of girder.



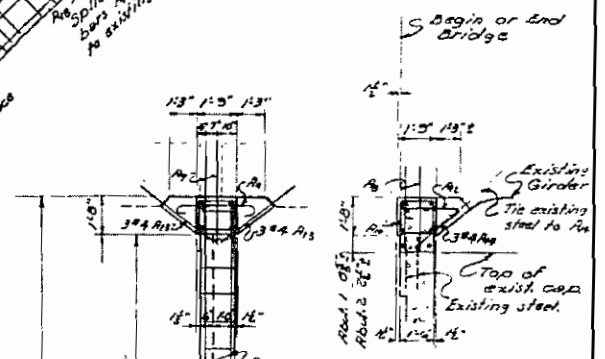
ELEVATION ABUTMENT NO. 1
SHOWING PORTIONS TO BE REMOVED
Scale: 1/4" = 1'-0"
Note: Details for Abutment No. 2 are similar but of opposite hand.



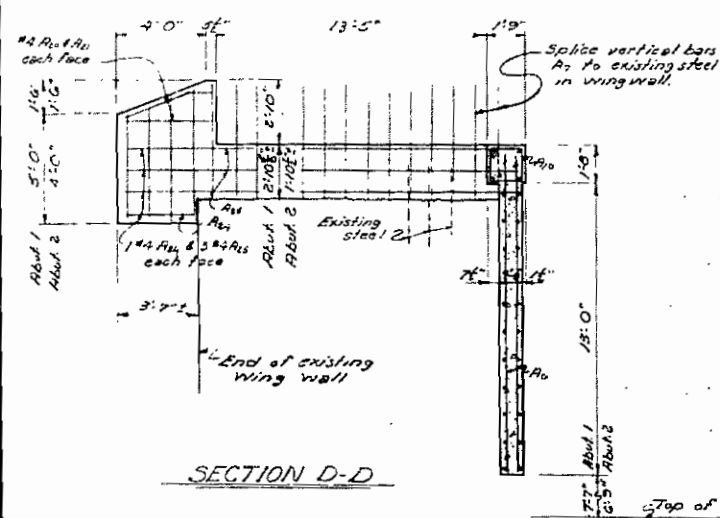
SECTION E-E



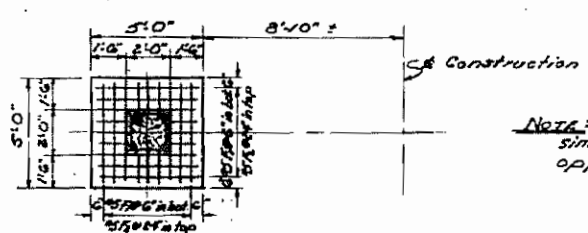
FRONT ELEVATION ABUTMENT NO. 1
Note: Details Abut. No. 2 are similar but of opposite hand.



SECTION C-C



SECTION D-D



FOOTING PLAN

Note: Details for Abutment No. 2 are similar to Abutment No. 1, but of opposite hand.

END ELEVATION NEW COLUMN ABUTMENT NO. 1

BAR LIST FOR ABUTMENTS NO. 1 & 2

ITEM	SIZE	NUMBER		LENGTH		A	K	P (Pin)	BENDING DIAGRAM	MARK	SIZE	NUMBER		LENGTH		A	K	P (Pin)			
		Abut. 1	Abut. 2	Abut. 1	Abut. 2							Abut. 1	Abut. 2	Abut. 1	Abut. 2						
F1	#5	10	18	5'-7"	4'-4"	3'-0"	5'-0"	3 1/2"		F1	#4	9	9	3'-0"	5'-0"	-	-	-	-		
F2	#5	6	6	9'-4"	4'-4"	-	-	-		F2	#5	6	6	20'-1"	20'-1"	-	-	-	-		
F3	#8	4	4	8'-11"	8'-11"	-	-	9'-0"		F3	#4	5	5	5'-10"	5'-3"	-	-	-	-		
A1	#8	4	4	11'-0"	10'-0"	-	-	-		A1	#4	12	12	10'-0"	10'-0"	-	-	-	-	-	-
A2	#8	4	4	14'-4"	14'-4"	-	-	-		A2	#4	4	4	10'-3"	10'-3"	-	-	-	-		
A3	#8	6	6	11'-0"	11'-0"	-	-	-		A3	#4	6	6	10'-3"	10'-3"	-	-	-	-		
A4	#4	12	12	9'-3"	9'-3"	-	-	-		A4	#4	4	4	4'-5"	4'-5"	-	-	-	-		
A5	#4	20	20	4'-4"	4'-4"	-	-	-		A5	#4	4	4	13'-3"	13'-3"	-	-	-	-		
A6	#4	20	20	2'-0"	2'-0"	-	-	-		A6	#4	4	4	3'-5"	3'-5"	-	-	-	-		
A7	#4	6	6	14'-0"	14'-0"	-	-	-		A7	#4	6	6	20'-0"	20'-0"	-	-	-	-		
A8	#4	36	36	5'-2"	4'-8"	-	-	-													
A9	#4	10	10	4'-7"	4'-8"	-	-	-													
A10	#4	24	24	3'-8"	3'-1"	-	-	-													
A11	#4	25	25	6'-1"	6'-1"	-	-	-													
A12	#6	3	3	4'-9"	4'-9"	5'-4"	3'-4"	G'-4 1/2"													
A13	#6	3	3	3'-5"	3'-5"	2'-4"	2'-4"	G'-4 1/2"													
A14	#4	6	6	4'-3"	4'-3"	-	-	-													

All dimensions, except P, are to centers of bars.

GENERAL NOTES
All concrete to be Class A. Exposed corners to be chamfered 1/2" unless otherwise noted.
Reinforcing steel to be deformed bars of intermediate grade unless modified by Special Provisions. Bar list and bending diagrams must be submitted and approved before fabrication is begun.
Work of removing portions of the existing abutments shall be paid for at the lump sum price bid for "Remodeling Existing Bridge Structures". Care shall be exercised to prevent damage to portions of structure that is to be retained.
Dimensions shown relating to existing structure are general only and adjustments necessary to conform to the existing structure shall be made.
Volume of bituminous fill shall be measured as and included in the volume of Class A concrete and paid for as Class A concrete.
For Details of R.C.D. Girder Spans see Eng. No. 9858 to 9861

Maximum foundation pressure = 3.3 Tons/sq ft

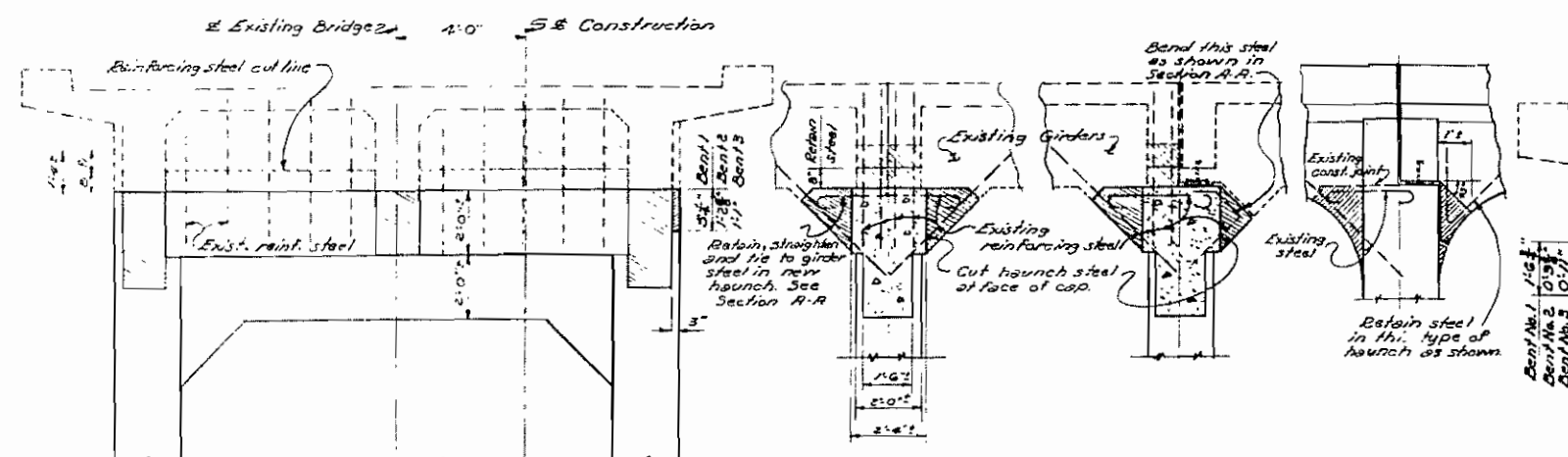
DETAILS OF REMODELING ABUTMENTS NO. 1 & 2
BRIDGE OVER BIG VACHE GRASSE CREEK
CAMP CHAFFEE - FRANKLIN COUNTY LINE RECONSTRUCTION
SEBASTIAN COUNTY

ROUTE 22 SEC. 1
ARKANSAS STATE HIGHWAY COMMISSION
LITTLE ROCK, ARK.

DRAWN BY: J.E.H. DATE: 9-14-56
CHECKED BY: J.E.M. DATE: 9-22-56
BRIDGE NO. 349 A DRAWING NO. 9253

L.P. Carlson
BRIDGE DESIGN ENGINEER

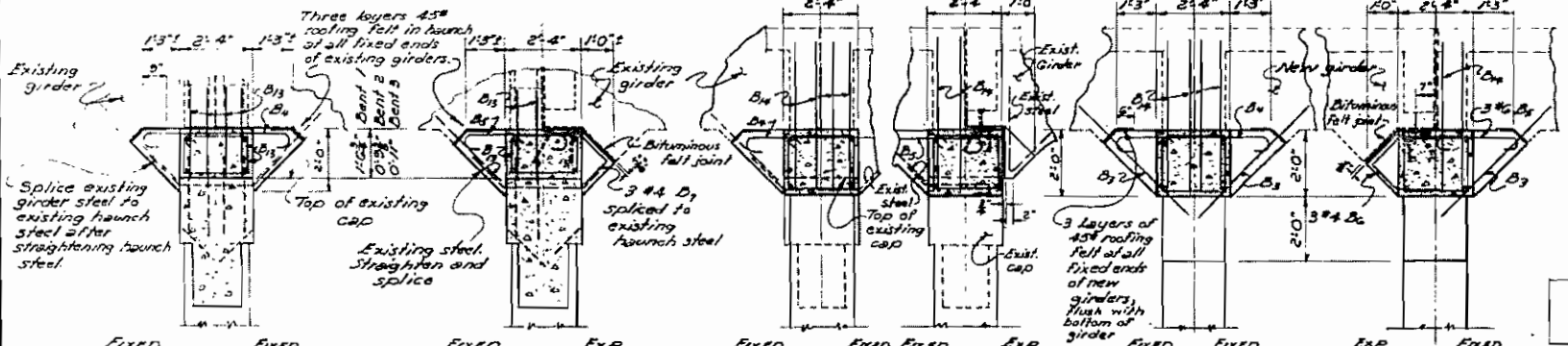
FED. ROAD No.	STATE	FED. AID	FISCAL YEAR	SHEET No.	TOTAL SHEETS
6	ARK.	F-022-110		41	161
JOB No.	442G				



ELEVATION OF EXISTING BENTS
 FIXED-FIXED BENT BENT No. 2
 FIXED-EXPANSION BENT BENTS No. 1 & 3
 END ELEVATION BENTS No. 1 & 3

Note: Contractor to remove shaded portions of existing structure as shown. Dashed shaded lines indicate portions of diaphragms to be removed and the portion of reinforcing steel to extend above the existing cap. Also see Dwg. No. 325D. Steel in haunches to be retained and tied to new work. Steel in haunches that extends into girders to be dipped at face of cap and retained. All steel that extends beyond new or existing work and not necessary shall be cut. Caps may be undercut under each girder so as to cut any steel projecting into girder if this be necessary. Bearing surfaces of existing girders not to be damaged. Upper bearing plates to be retained.

DETAILS OF EXISTING BENTS NO. 1, 2 & 3 SHOWING PORTIONS TO BE REMOVED



SECTIONS A-A
 SECTIONS B-B
 SECTIONS C-C

TYPICAL SECTIONS

For Bents 1 & 3 some Sections shown are of opposite hand. See Layout for correct position.

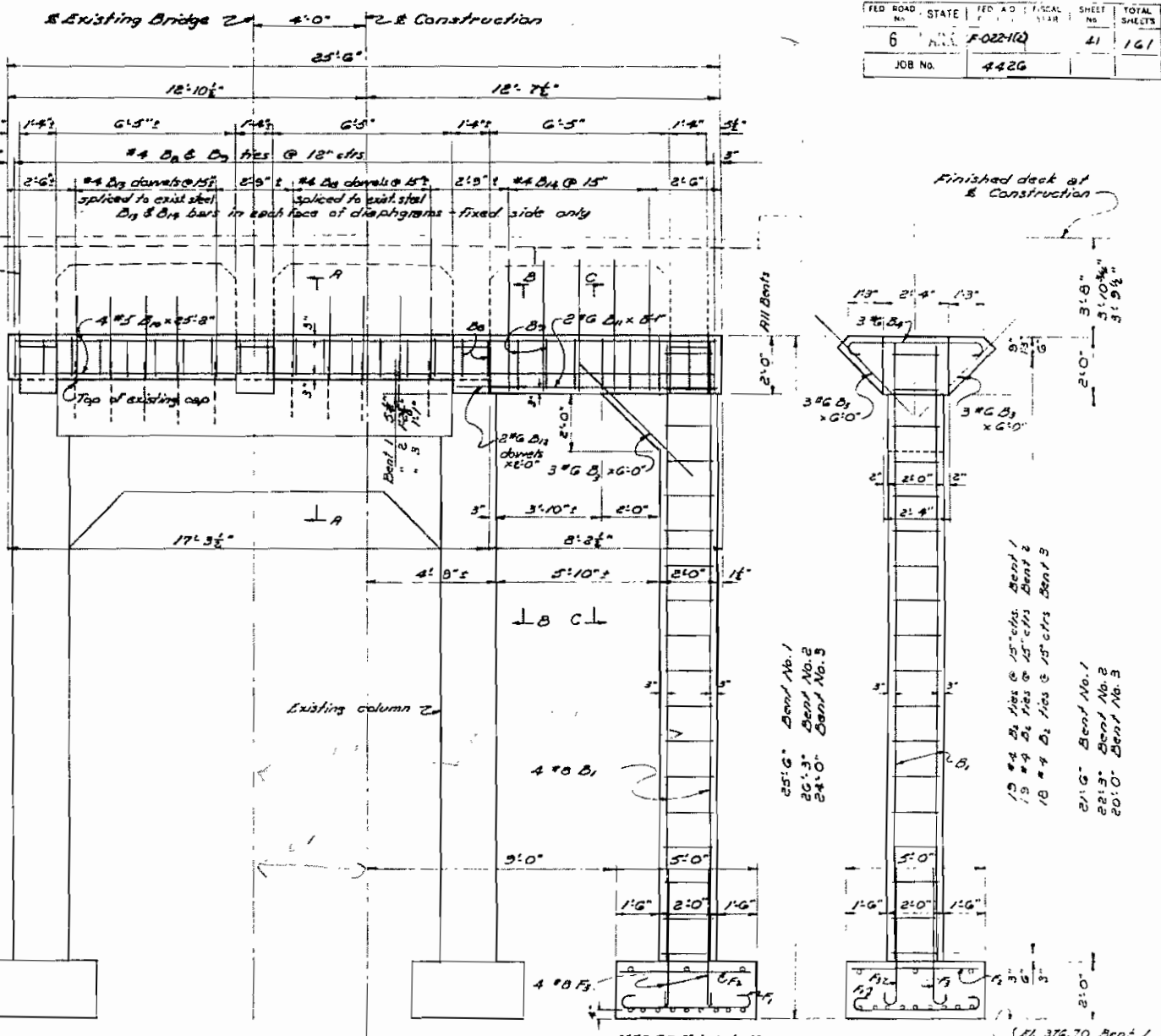
BAR LIST FOR BENTS NO. 1, 2 & 3

MARK	SIZE	NO. PER BENT			LENGTH			A			K	P (Per Dia)	BENDING DIAGRAM
		BENT No.	1	2	3	BENT No.	1	2	3	BENT No.			
B1	#5	18	18	18	5'7"	5'7"	5'7"	4'4"	4'4"	4'4"	5'	3 1/2"	
B2	#5	6	6	6	4'4"	4'4"	4'4"	-	-	-	-	-	
B3	#8	4	4	4	6'2"	6'2"	6'2"	-	-	-	9'	8"	
B4	#8	4	4	4	23'1"	23'10"	21'7"	-	-	-	-	-	
B5	#4	18	18	18	7'3"	7'3"	7'3"	-	-	-	4'	1 1/2"	
B6	#6	6	6	6	6'0"	6'0"	6'0"	-	-	-	-	-	
B7	#6	-	12	-	-	5'11"	-	4'6"	-	-	6'	4 1/2"	
B8	#6	12	-	12	4'5"	-	4'5"	3'0"	-	3'0"	6'	4 1/2"	
B9	#4	3	-	3	5'6"	-	5'6"	-	-	-	-	-	
B10	#4	3	-	3	4'0"	-	4'0"	-	-	-	-	-	
B11	#4	18	18	18	7'1"	5'5"	5'5"	1'3"	0'5"	0'7"	4'	1 1/2"	
B12	#4	8	8	8	7'11"	7'11"	7'11"	1'8"	1'8"	1'8"	4'	1 1/2"	
B13	#5	4	4	4	25'2"	25'2"	25'2"	-	-	-	-	-	
B14	#6	2	2	2	8'1"	8'1"	8'1"	-	-	-	-	-	
B15	#6	2	2	2	8'0"	8'0"	8'0"	-	-	-	-	-	
B16	#4	10	20	10	2'10"	2'1"	2'3"	-	-	-	-	-	
B17	#4	5	10	5	4'7"	4'7"	4'7"	-	-	-	-	-	

All dimensions, except "P" are to centers of bars.

NOTES

For General Notes, see Dwg. No. 325A.
 Concrete to be Class A.
 Bearing: Disregard existing lower bearing plates. Adjust new bearing plates to alignment and grade of upper existing plates so uniform bearing pressure will result. Concrete surface of new cap under existing girders shall have a grade equal to girder bearing surface so that uniform bearing pressure will result at fixed ends. Cap under new girders shall be level. For bearing plate details see Dwg. No. 326.
 For Details of R.C.D. Girder Spans see Dwg. Nos. 325B to 328.
 Maximum bearing pressure 2.7 tons/sq. ft.

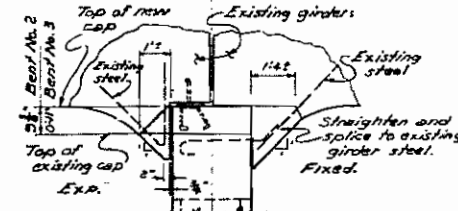


WEST ELEVATION BENTS 1, 2 & 3

END ELEVATION

(TYPE SHOWN IS FOR BENT NO. 2)
 (For other types see Sections 482C)

FOOTING PLAN



NORTH ELEVATION BENT NO. 2
 Opposite Hand For Bent No. 3

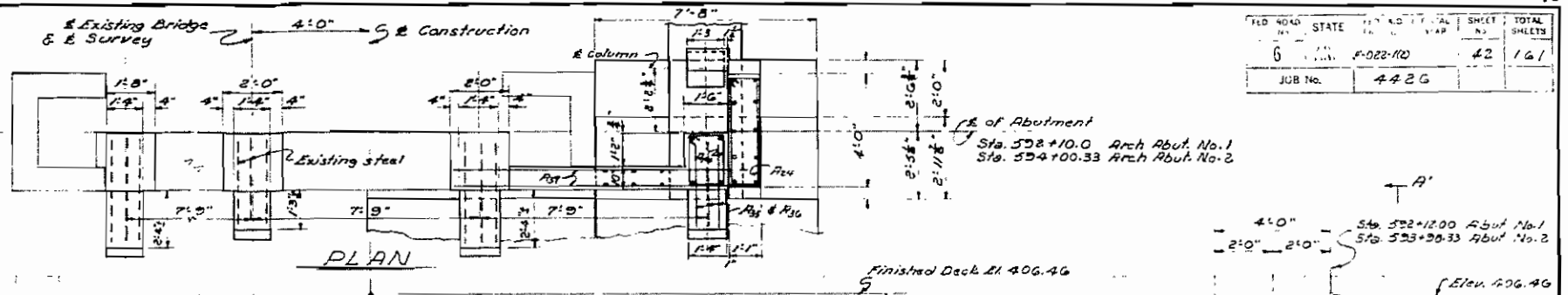
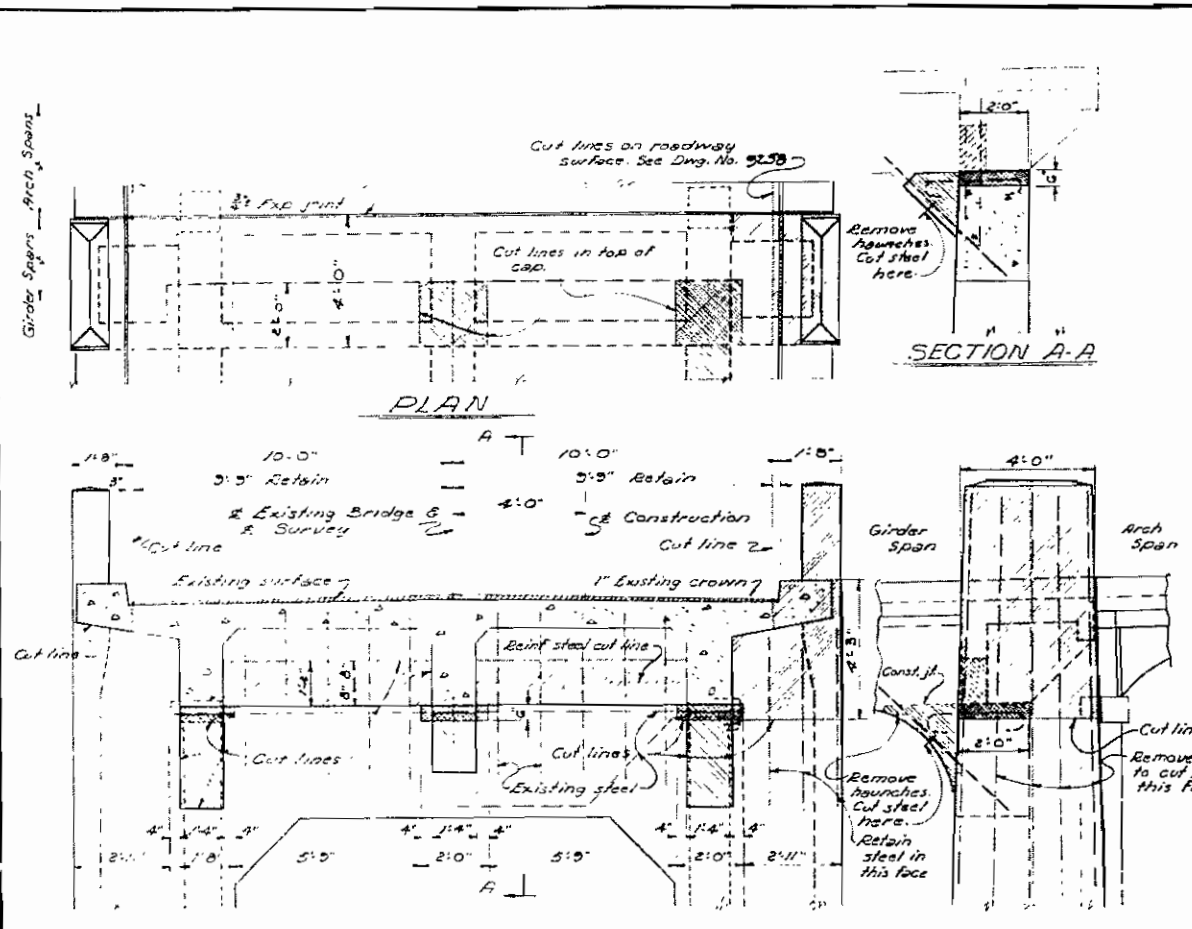
DETAILS OF REMODELING BENTS NO. 1, 2 & 3
 BRIDGE OVER BIG VACHE GRASSE CREEK
 CAMP CHAFFEE - FRANKLIN COUNTY LINE RECON.

SEBASTIAN COUNTY
 ROUTE 22 SEC. 1
 ARKANSAS STATE HIGHWAY COMMISSION
 LITTLE ROCK, ARK.

SCALE: 3/8" = 1'-0"
 DRAWN BY: J.E.H. DATE: 9-20-56
 TRACED BY: DATE: _____
 CHECKED BY: J.E.M. DATE: 9-24-56
 BRIDGE NO. 349A DRAWING NO. 9254

L.O. Carlson
 BRIDGE DESIGN ENGINEER

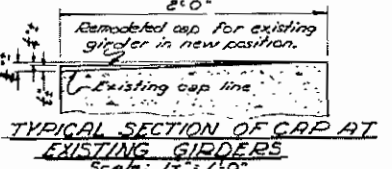
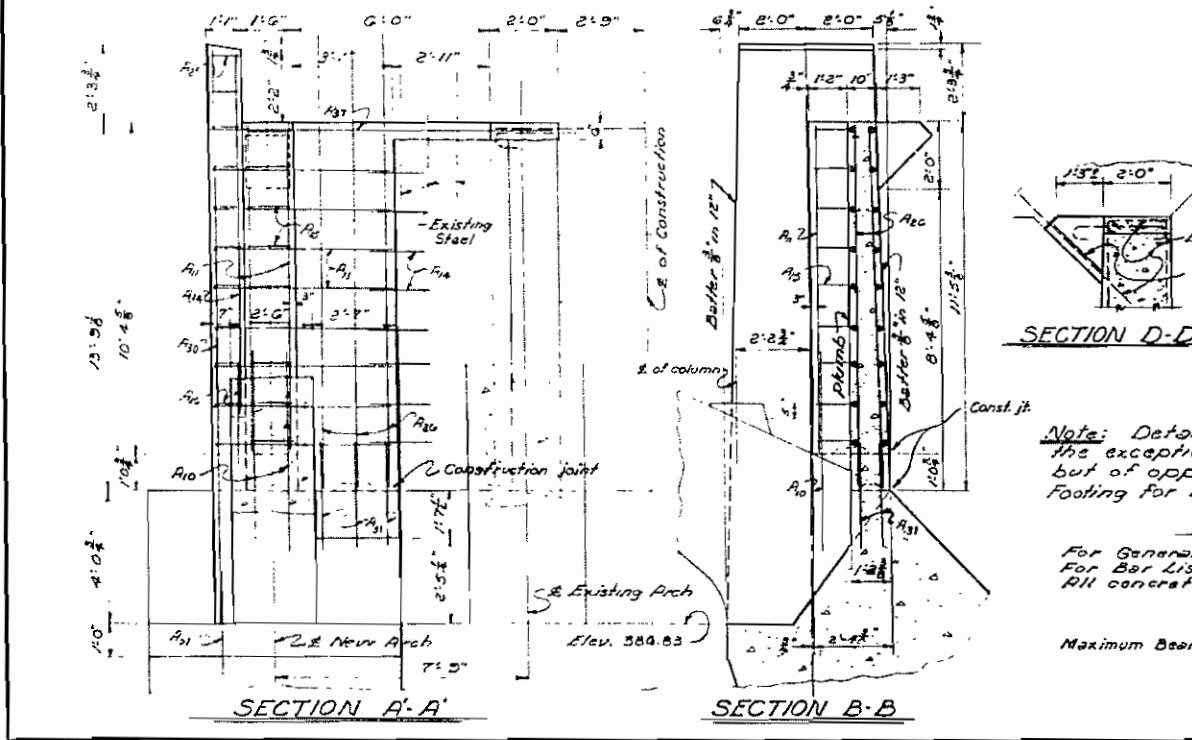
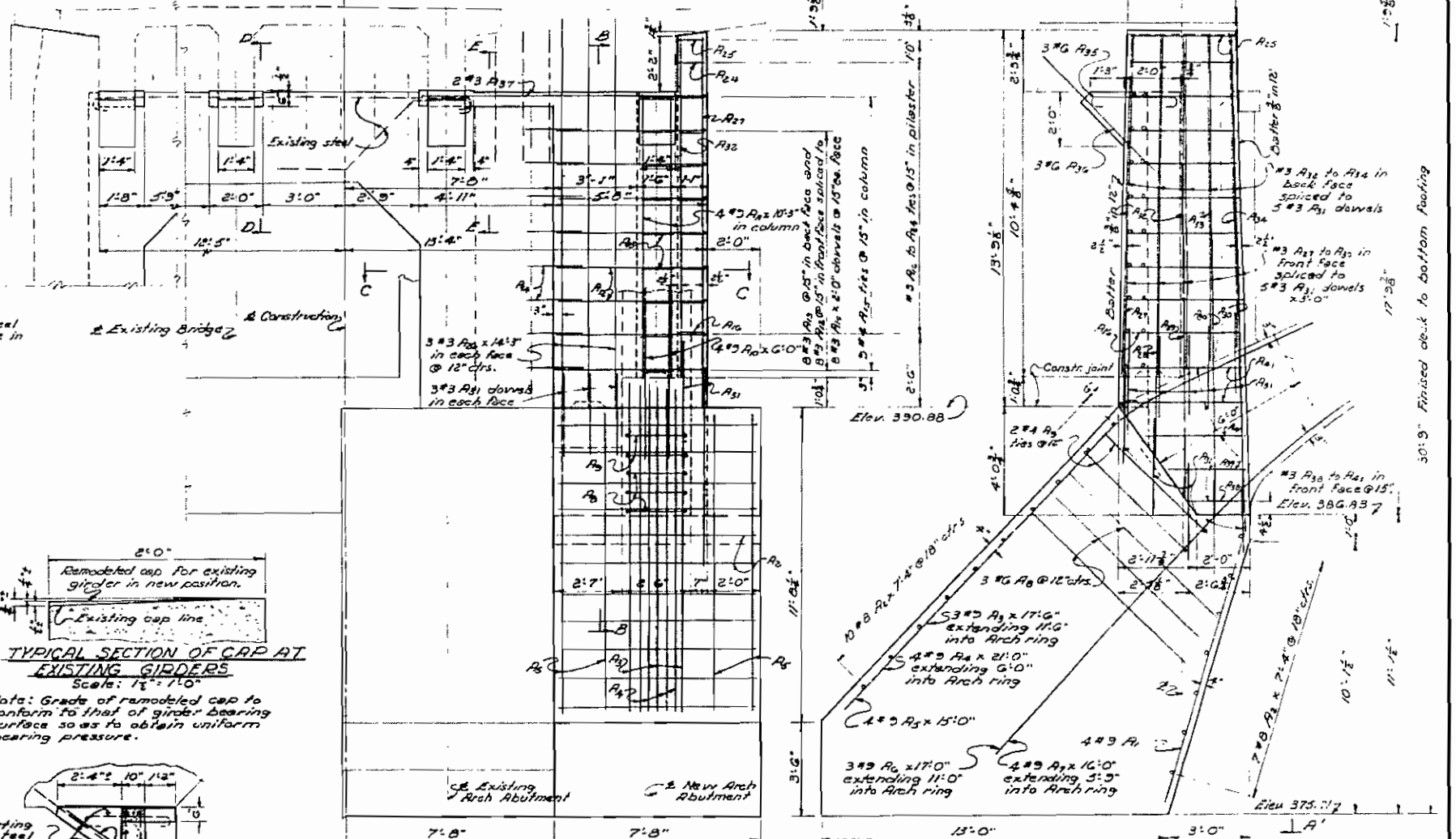
FLD NO.	STATE	DATE	SHEET NO.	TOTAL SHEETS
6	AR.	10-22-10	42	161
JOB No.		4426		



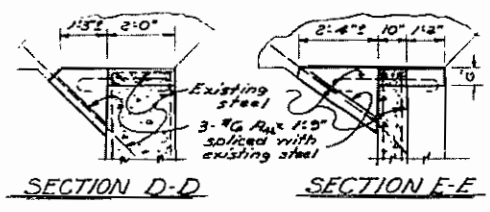
DETAILS ARCH ABUTMENT NO.1 SHOWING PORTIONS TO BE REMOVED

NOTE: DETAILS OF ARCH ABUTMENT NO.2 ARE SIMILAR BUT OF OPPOSITE HAND

Note: Contractor to remove shaded portions of existing structure as shown. In general, retain the reinforcing steel, straighten, scrape clean and tie to new work. Reinforcing steel in top of cap is not to be disturbed. Hooked bars in top of haunches to be retained as is, with one hooked and embedded in the existing concrete. Dashed shaded lines indicate portion of diaphragms to be removed as shown on Dwg. No. 9259. For details of remodeling girder spans see Dwg. Nos. 925B to 926I.



Note: Grade of remodeled cap to conform to that of girder bearing surface so as to obtain uniform bearing pressure.



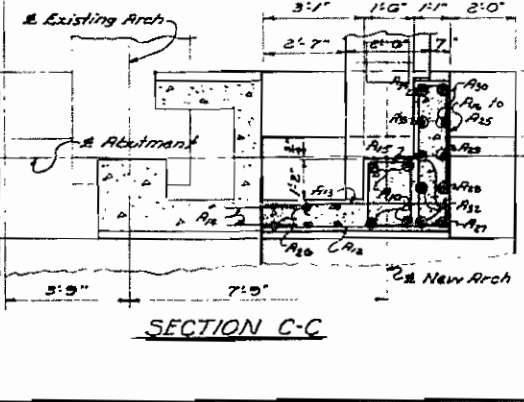
Note: Details for Abutment No. 2, with the exception of the footing, are similar but of opposite hand. For Details of Footing for Abut. No. 2, see Dwg. No. 9256

NOTES

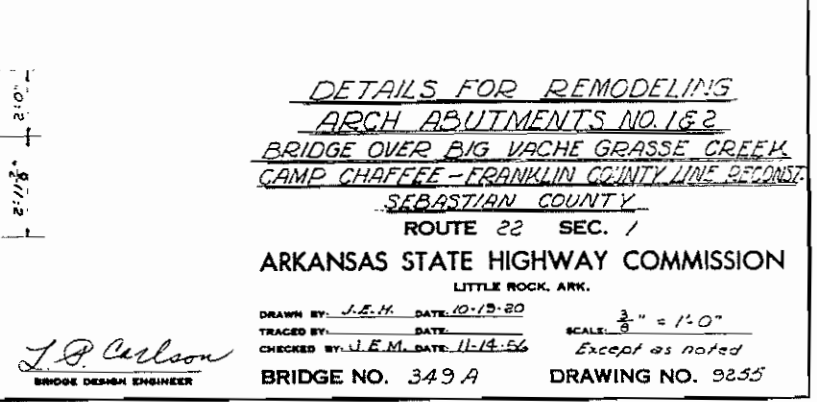
For General Notes see Dwg. No. 9256.
For Bar List, see Dwg. No. 9256.
All concrete to be Class A.

Maximum Bearing Pressure = 5 tons/sq.

WEST ELEVATION ARCH ABUTMENT NO.1



SOUTH ELEVATION ARCH ABUTMENT NO.1



DETAILS FOR REMODELING ARCH ABUTMENTS NO. 1 & 2

BRIDGE OVER BIG VACHE GRASSE CREEK

CAMP CHAFFEE - FRANKLIN COUNTY LINE RECONSTR.

SEBASTIAN COUNTY

ROUTE 22 SEC. 1

ARKANSAS STATE HIGHWAY COMMISSION

LITTLE ROCK, ARK.

DRAWN BY: J.E.H. DATE: 10-13-80
TRACED BY: DATE:
CHECKED BY: J.E.M. DATE: 11-14-86
SCALE: 3/8" = 1'-0"
Except as noted

BRIDGE NO. 349 A DRAWING NO. 9255

J.P. Carlson
BRIDGE DESIGN ENGINEER

FED. ROAD DIST. NO.	STATE	FED. AID DIST. NO.	SHEET NO.	TOTAL SHEETS
6	ARK.	F022-102	43	161
JOB No.		442G		

BAR LIST - ARCH ABUTMENTS NO. 1 & 2

MARK	SIZE	No. REQ'D.		LENGTH		R	P PIN DIAM.	BENDING DIAGRAM
		ABUT. 1	ABUT. 2	ABUT. 1	ABUT. 2			
A1	#3	4	4	10'-9"	8'-0"	-	-	
A2	#8	17	15	7'-4"	7'-4"	-	-	
A3	#8	3	3	17'-6"	15'-6"	-	-	
A4	#3	4	4	21'-0"	19'-0"	-	-	
A5	#3	4	4	15'-0"	14'-0"	-	-	
A6	#3	3	3	17'-0"	16'-0"	-	-	
A7	#3	4	4	16'-0"	15'-0"	-	-	
A8	#6	3	3	16'-1"	16'-1"	-	-	
A9	#4	2	2	15'-3"	15'-3"	4"	1 1/2"	
A10	#3	4	4	6'-0"	6'-0"	-	-	
A11	#3	4	4	10'-3"	10'-3"	-	-	
A12	#3	8	8	6'-6"	6'-6"	-	-	
A13	#3	8	8	5'-6"	5'-6"	-	-	
A14	#3	16	16	2'-0"	2'-0"	-	-	
A15	#4	9	9	Varies 6'-3" to 6'-11"	Varies 6'-3" to 6'-11"	4"	1 1/2"	
A16	#3	1	1	Varies 11'-1" to 2'-7"	Varies 11'-1" to 2'-7"	3"	1 1/2"	
A17	#3	6	6	14'-3"	14'-3"	-	-	
A18	#3	1	1	13'-7"	13'-7"	-	-	
A19	#3	1	1	15'-6"	15'-6"	-	-	
A20	#3	1	1	17'-0"	17'-0"	-	-	
A21	#3	2	2	17'-0"	17'-0"	-	-	
A22	#3	16	16	3'-0"	3'-0"	-	-	
A23	#3	3	3	12'-5"	12'-5"	-	-	
A24	#3	1	1	12'-1"	12'-1"	-	-	
A25	#3	1	1	11'-7"	11'-7"	-	-	
A26	#6	3	3	4'-7"	4'-7"	6"	4 1/2"	
A27	#6	3	3	6'-0"	6'-0"	-	-	
A28	#3	2	2	11'-3"	11'-3"	-	-	
A29	#3	1	1	2'-1"	2'-1"	-	-	
A30	#3	1	1	3'-0"	3'-0"	-	-	
A31	#3	2	2	4'-6"	4'-6"	-	-	
A32	#6	9	9	1'-9"	1'-9"	-	-	

BAR LIST - PIER NO. 1

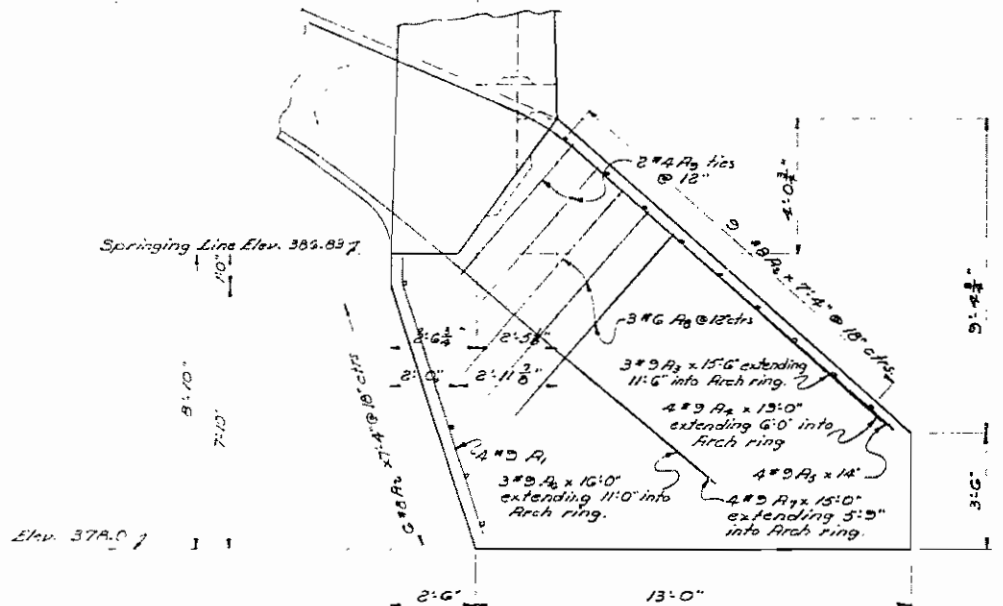
MARK	SIZE	No.	LENGTH	R	K	P PIN DIAM.	BENDING DIAGRAM	
								P1
P2	#6	7	9'-10"	-	-	-		
P3	#6	1	8'-6"	-	-	-		
P4	#6	9	9'-0"	-	-	-		
P5	#3	14	3'-8"	8'-5"	10'	9"		
P6	#4	17	6'-0"	-	-	-		
P7	#3	6	23'-9"	-	-	-		
P8	#3	8	18'-6"	-	-	-		
P9	#3	6	18'-0"	-	-	-		
P10	#3	8	13'-0"	-	-	-		
P11	#4	8	9'-0"	3'-8"	-	-		
P12	#4	2	8'-2"	2'-10"	-	-		
P13	#4	2	7'-4"	2'-0"	-	-		
P14	#4	2	6'-2"	0'-10"	-	-		
P15	#4	4	10'-2"	-	-	-		
P16	#4	2	10'-10"	-	-	-		
P17	#4	1	10'-11"	-	-	-		
P18	#5	10	13'-9"	-	-	-		
P19	#5	10	13'-8"	-	-	-		
P20	#3	Each	Varies 2'-3" to 5'-8"	4'-7" to 3'-6"	3"	1 1/2"		
P21	#5	4	8'-1"	-	-	-		
P22	#5	4	8'-0"	7'-2"	5"	3 3/4"		
P23	#4	18	5'-9"	-	4"	1 1/2"		
P24	#4	33	3'-9"	-	-	-		
P25	#3	7	3'-9"	-	-	-		
P26	#3	7	3'-9"	-	-	-		
P27	#3	7	3'-9"	-	-	-		
P28	#3	8	5'-6"	-	-	-		
P29	#3	4	4'-0"	-	-	-		

Note: - Dimensions are to centers of bars with the exception of P.

GENERAL NOTES

Dimensions and elevations relating to the existing Arch Abutments, Pier and Arch Spans shall be verified in the field before construction is begun and before approval of the bar lists of reinforcing steel is made. Concrete in Arch Abutments, Arch Rings, Pier and Columns shall be Class A. Concrete in all portions of arch spans above column caps shall be Class S. All exposed corners to be chamfered 3/4" unless otherwise noted. Construction joints in piers and abutments to be horizontal with keys 3" high covering the middle third of both dimensions.

For remaining General Notes see Dwg. No. 9260.



SOUTH ELEVATION OF FOOTING FOR ARCH ABUTMENT NO. 2
For Remaining Details see Dwg. No. 9255.

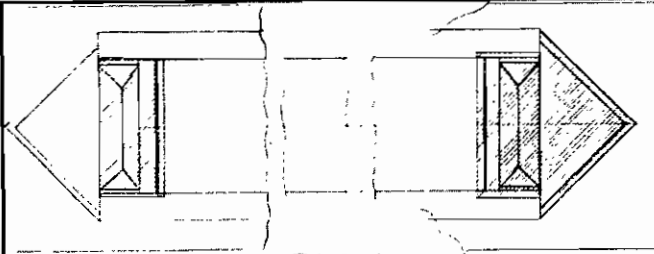
DETAILS OF FOOTING ARCH ABUT. NO. 2
BAR LISTS FOR ARCH ABUTS. 1 & 2 & PIER NO. 1
BRIDGE OVER BIG VACHE GRASSE CREEK
CAMP CHAFFEE - FRANKLIN COUNTY LINE RECONSTR.

SEBASTIAN COUNTY
ROUTE 22 SEC. 1
ARKANSAS STATE HIGHWAY COMMISSION
LITTLE ROCK, ARK.

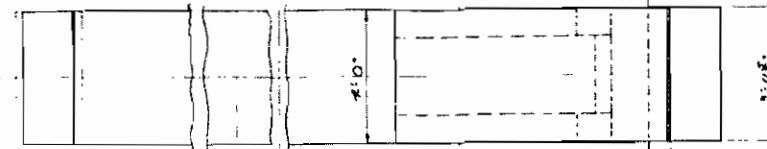
DRAWN BY: J.E.H. DATE: 11-7-56
TRACED BY: DATE: _____
CHECKED BY: J.E.M. DATE: 11-14-56
SCALE: 3/8" = 1'-0"
BRIDGE NO. 349 A DRAWING NO. 9256

L.P. Carlson
BRIDGE DESIGN ENGINEER

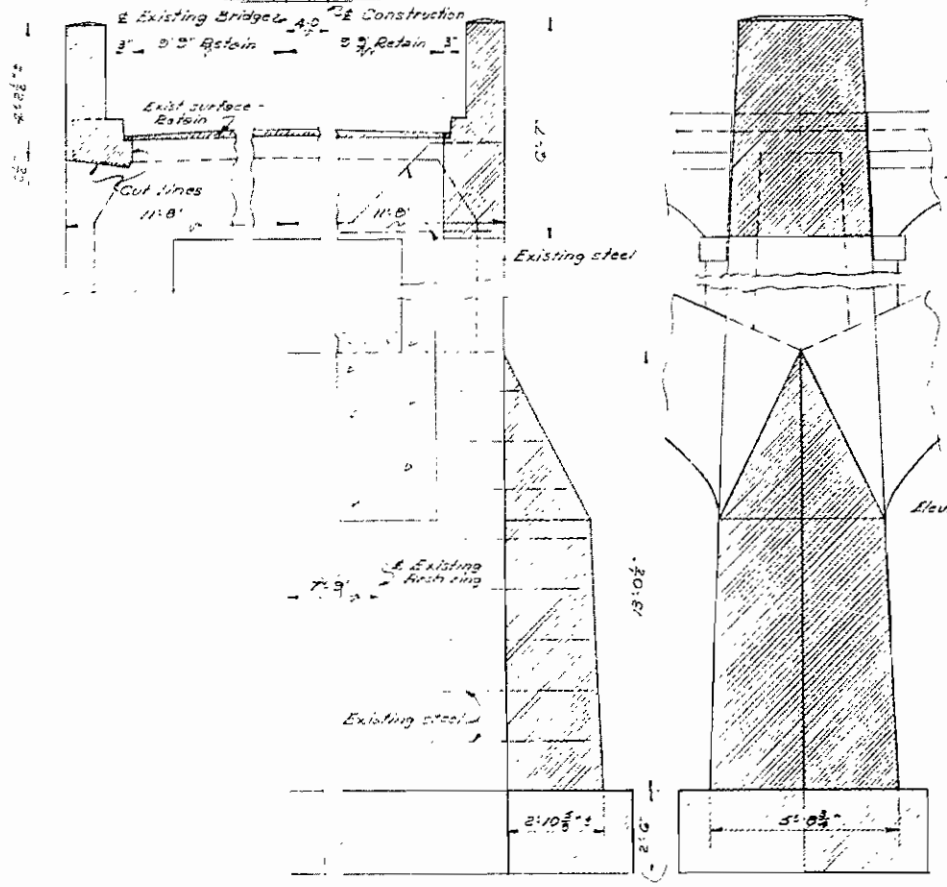
FED. ROAD No.	STATE	FED. AID PROJECT	FISCAL YEAR	SHEET No.	TOTAL SHEETS
6	ARK.	022-124		24	161
JOB No.		442G			



PLAN



PLAN

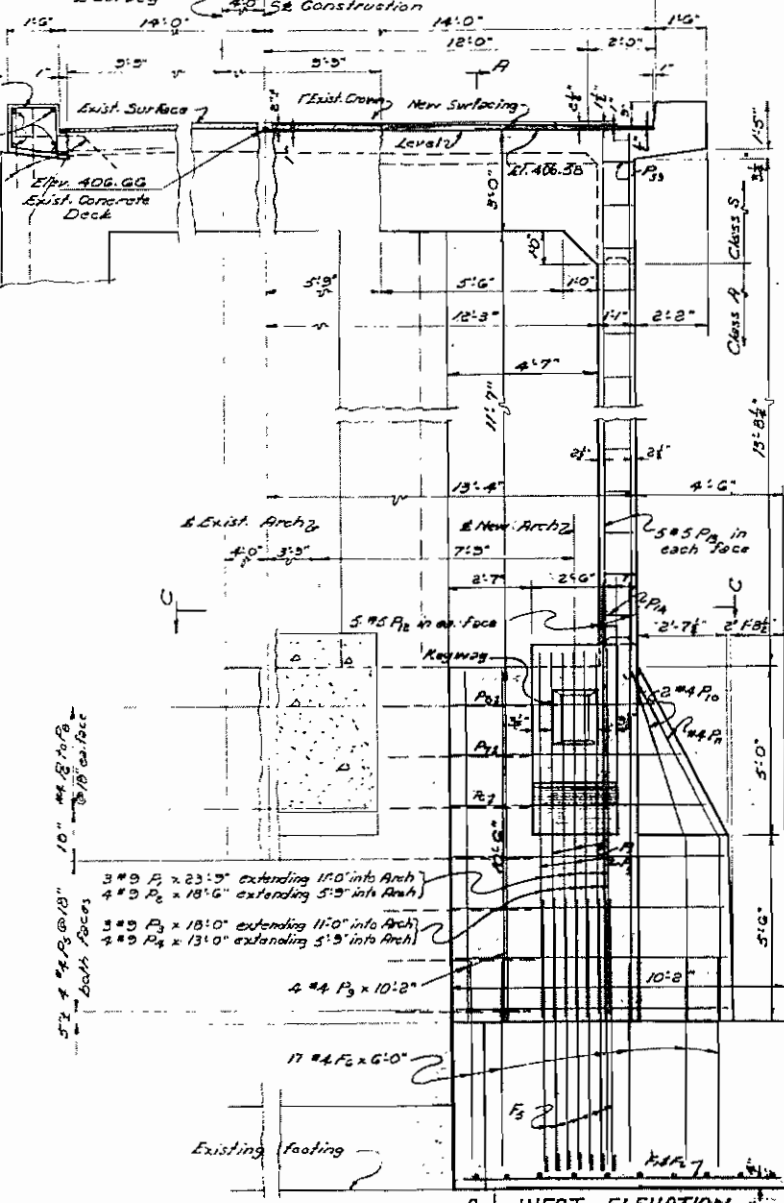


WEST ELEVATION

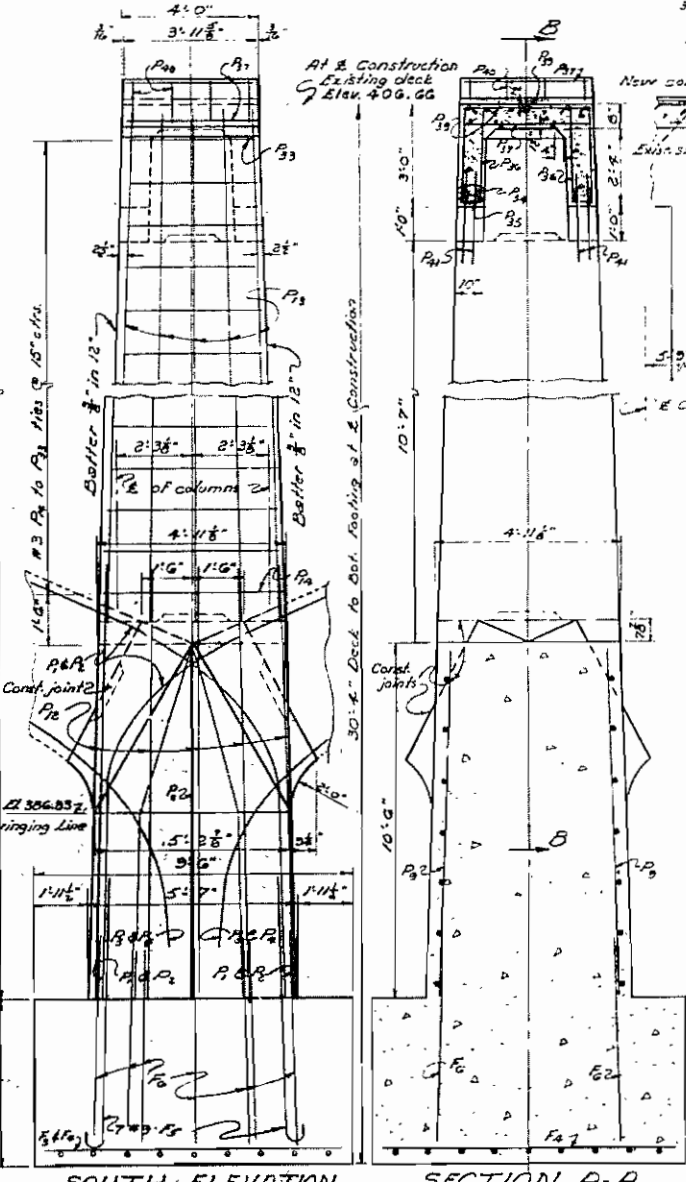
SOUTH ELEVATION

DETAILS OF PIER NO. 1 SHOWING PORTIONS TO BE REMOVED

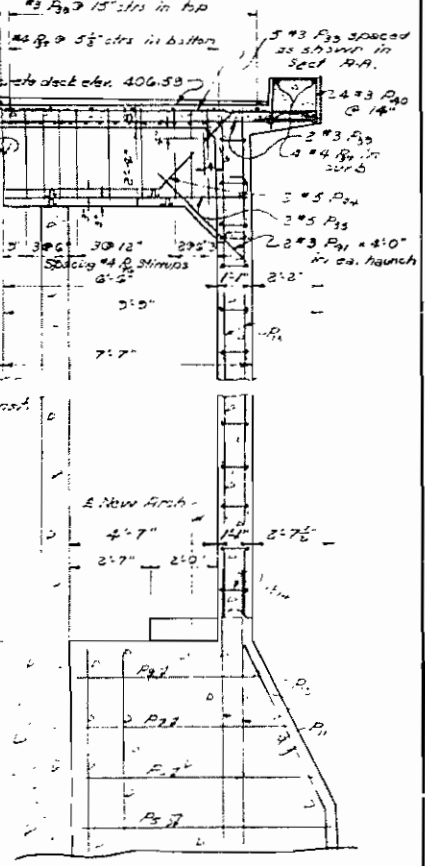
Notes: Contractor to remove shaded portions of Pier as shown. Reinforcing steel to be retained, scraped clean and tied to new work. Steel that will extend beyond new work shall be removed. Existing surfacing shall be retained if in a satisfactory condition.



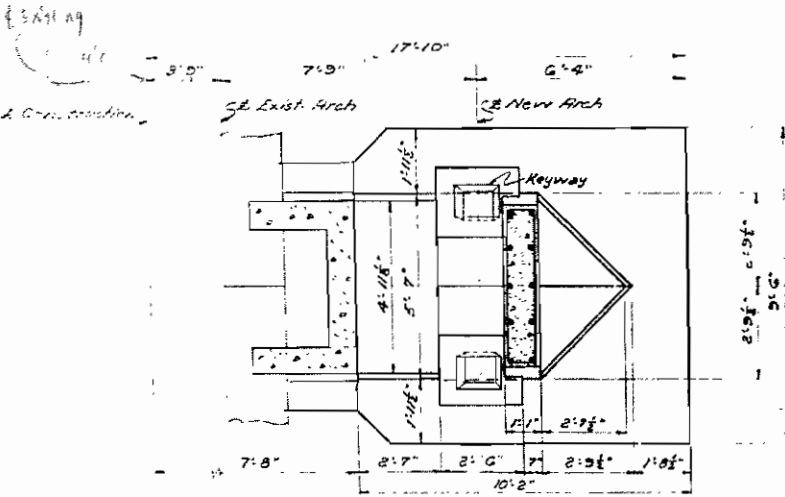
WEST ELEVATION



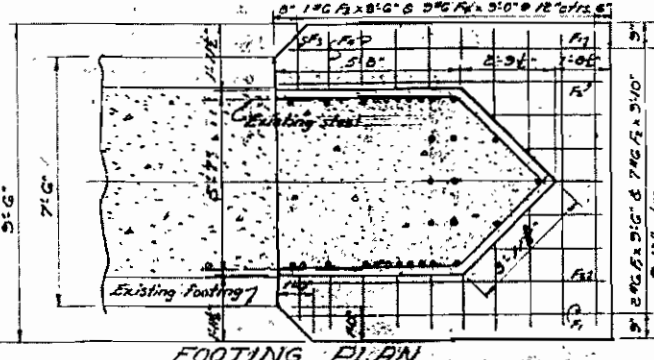
SOUTH ELEVATION



SECTION B-B



SECTION C-C



FOOTING PLAN

NOTES

For General Notes see Dwg. No. 925G.
For Details of Arch Spans see Dwg. No. 92G.
For Bar List see Dwg. No. 925G.

Max. Bearing Pressure = 2.5 tons/sq. ft.

DETAILS FOR REMODELING PIER NO. 1
BRIDGE OVER BIG VACHE GRASSE CREEK
CAMP CHAFFEE - FRANKLIN COUNTY LINE RECONST.
SEBASTIAN COUNTY

ROUTE 22 SEC. 1

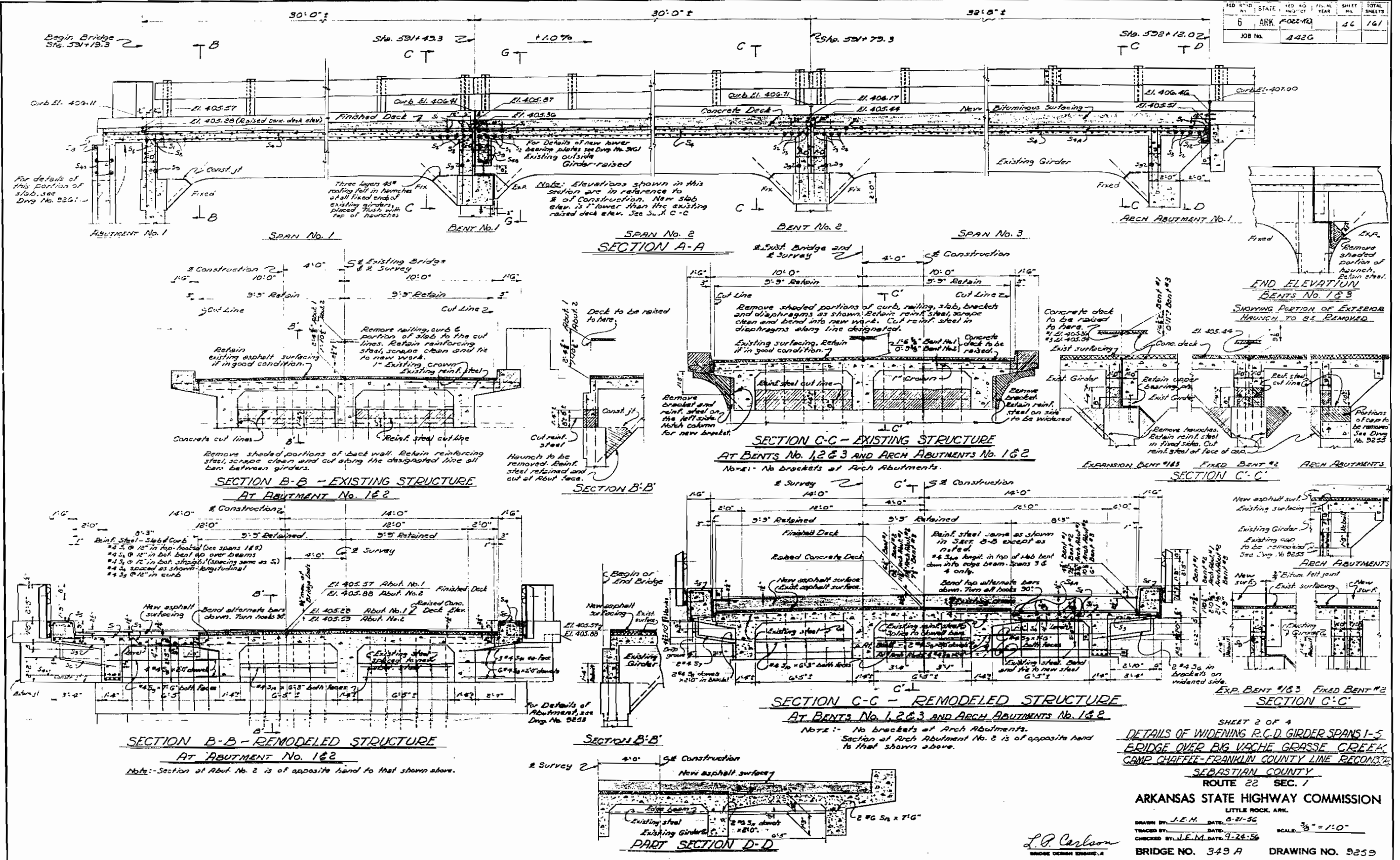
ARKANSAS STATE HIGHWAY COMMISSION
LITTLE ROCK, ARK.

DRAWN BY: J.E.H. DATE: 11-1-56
CHECKED BY: E.P.E. DATE: 11-12-56

BRIDGE NO. 349A DRAWING NO. 9257

L.D. Carlson
BRIDGE DESIGN ENGINEER

FED. ROAD DIST. NO.	STATE	FED. AID DIST. NO.	FISCAL YEAR	SHEET NO.	TOTAL SHEETS
6	ARK.	1022-102		16	161
JOB NO.		442G			



SHEET 2 OF 4
 DETAILS OF WIDENING P.C.D. GIRDER SPANS 1-5
 BRIDGE OVER BIG VACHE GRASSE CREEK
 CAMP CHAFFEE-FRANKLIN COUNTY LINE RECONSTRUCTION
 SEBASTIAN COUNTY
 ROUTE 22 SEC. 1
 ARKANSAS STATE HIGHWAY COMMISSION
 LITTLE ROCK, ARK.

L.P. Carlson
 BRIDGE DESIGN ENGINEER

DRAWN BY: J.E.H. DATE: 8-21-56
 TRACED BY: DATE: 9-24-56
 CHECKED BY: J.E.H. DATE: 9-24-56
 SCALE: 3/8" = 1'-0"
 BRIDGE NO. 349 A DRAWING NO. 9259

FED. ROAD DIST. NO.	STATE	FED. AID PROJECT NO.	FISCAL YEAR	SHEET NO.	TOTAL SHEETS
6	ARK.	F022-122		47	141
JOB No.		442G			

GENERAL NOTES

Dimensions and elevations relating to the existing abutments, bents and girder spans shall be verified in the field before construction is begun and before approval of the bar lists of reinforcing steel is given.

Payment for work in removing all portions of existing structure, as shown and as necessary, drilling holes and grouting new reinforcing dowell bars into the old concrete, sawing existing joints and removing any portion of existing bituminous surfacing shall be paid for at the lump sum price bid for "Remodeling Existing Bridge Structures."

All existing reinforcing steel shall be retained that can be tied to the new work except that which will fall outside the limits of the new work.

Concrete in abutments and bents to be Class A. Concrete in girder spans and wing walls poured with the girder spans to be Class S. All exposed corners to be chamfered $\frac{1}{4}$ " unless otherwise noted.

Reinforcing steel to be deformed bars of intermediate grade unless modified by Special Provisions. Shop lists and bending diagrams must be submitted and approved secured before fabrication is begun.

All reinforcing steel shall be accurately located in the forms and firmly held in place by means of steel wire supports, sufficient in size and number to prevent displacement during the course of construction. Wire supports will not be paid for directly but will be considered subsidiary to the item "Reinforcing Steel." Shop lists and diagrams of the type to be furnished must be submitted for approval.

Shop welds to be $\frac{3}{16}$ " continuous fillets by the electric arc process unless otherwise noted.

Steel plate guard shall be of the type shown or an equivalent rigid type as approved by the Engineer. The Steel Plate Guard including all posts, fastenings and concrete turnout posts shall be paid for at the unit price bid per linear foot for "Steel Plate Guard."

Bearing plates to be structural steel and paid for at the unit price bid per pound for "Structural Steel in Beam Spans."

Paint: All structural steel and steel plate guard, including post and fastenings, shall be given one shop coat of red lead and raw linseed oil. Field paint: 1st. coat white lead tinted with lamp black; 2nd coat, aluminum paint.

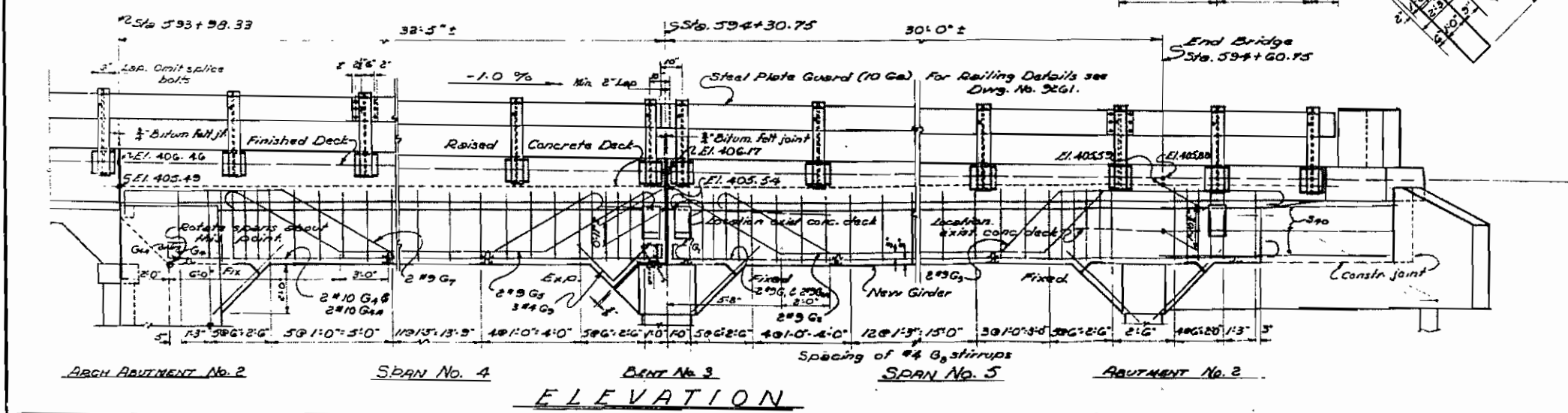
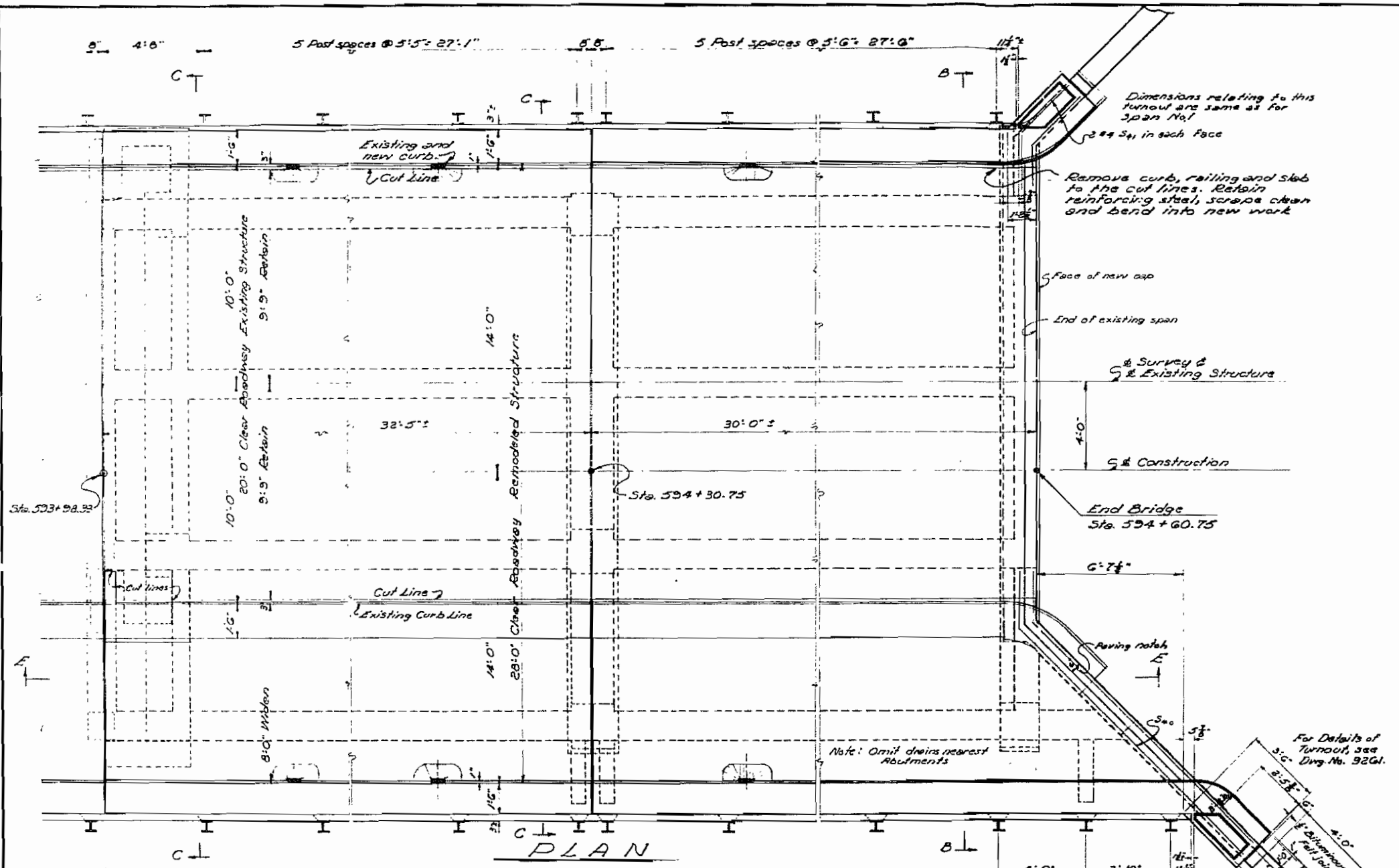
Roofing and bituminous felt joints are to be measured as and paid for as Class S Concrete.

Payment for raising the superstructure of the existing bridge to the new grade shall be paid for at the lump sum price bid for "Remodeling Existing Bridge Structures."

For Details of Abutment No. 1 & 2 see Dwg. No. 9253
 For Details of Bents No. 1, 2 & 3 see Dwg. No. 9254
 For Details of R.C.D. Girder Spans No. 1 to 5 see Dwg. No. 9255 to 9260
 For Details and Bar List R.C.D. Girder Spans No. 1 to 5, see Dwg. No. 9261

SPECIFICATIONS:- Arkansas State Highway Commission Standard Specifications for Road and Bridge Construction adopted March 1, 1973.

DESIGN SPECIFICATIONS	A.A.S.H.O. 1953 H-20	
	EXISTING GIRDERS	NEW GIRDERS
Load Distribution	1955%	2565%
Dead Load	1.43	1.36
Live Load (wheels)	30%	30%
Impact		
DESIGN UNIT STRESSES		
Class S Concrete (n=12)	1000 %	-
Class S Concrete (n=10)	-	1200 %
Reinforcing Steel (Int. Grade)	20,000 %	20,000 %



SHEET 3 OF 4

DETAILS OF WIDENING R.C.D. GIRDER SPANS 4 & 5
 BRIDGE OVER BIG VACHE GRASSE CREEK
 CAMP CHAFFEE-FRANKLIN COUNTY LINE RECONSTRUCTION
 SEBASTIAN COUNTY
 ROUTE 22 SEC. 1
 ARKANSAS STATE HIGHWAY COMMISSION
 LITTLE ROCK, ARK.

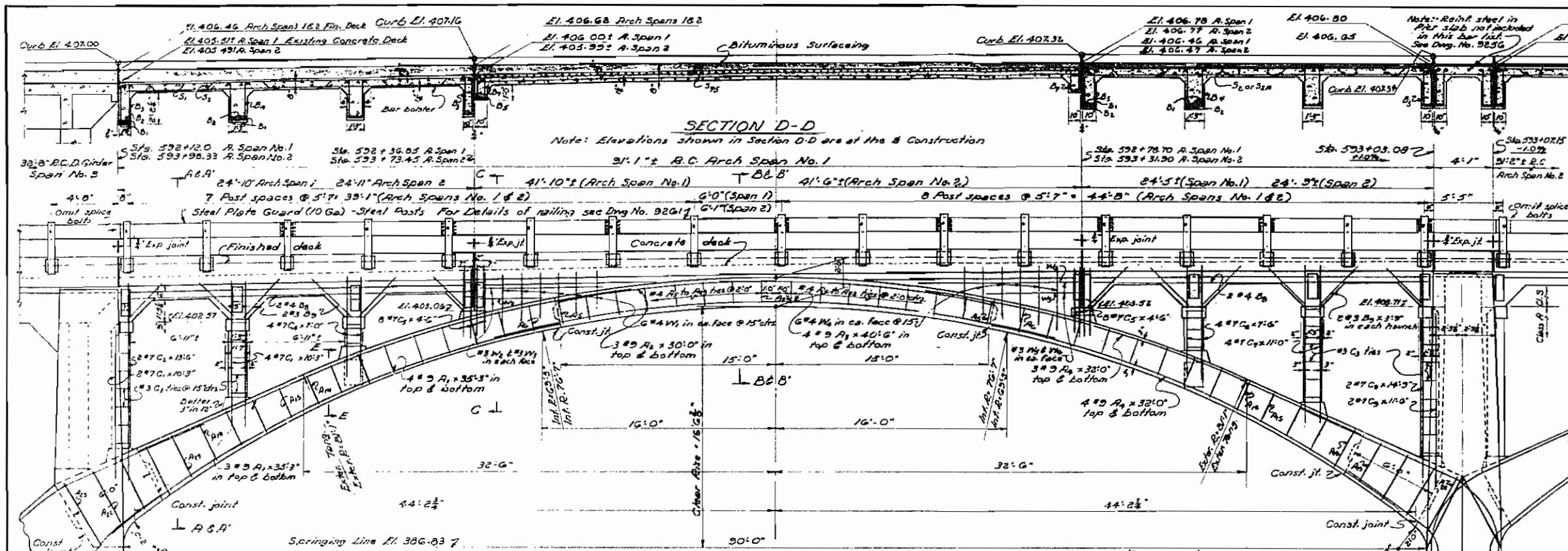
DRAWN BY: J.E.H. DATE: 8-19-56
 TRACED BY: DATE: 9-26-56
 CHECKED BY: J.E.H. DATE: 9-26-56

SCALE: $\frac{3}{8}$ " = 1'-0"

BRIDGE NO. 349 A DRAWING NO. 9260

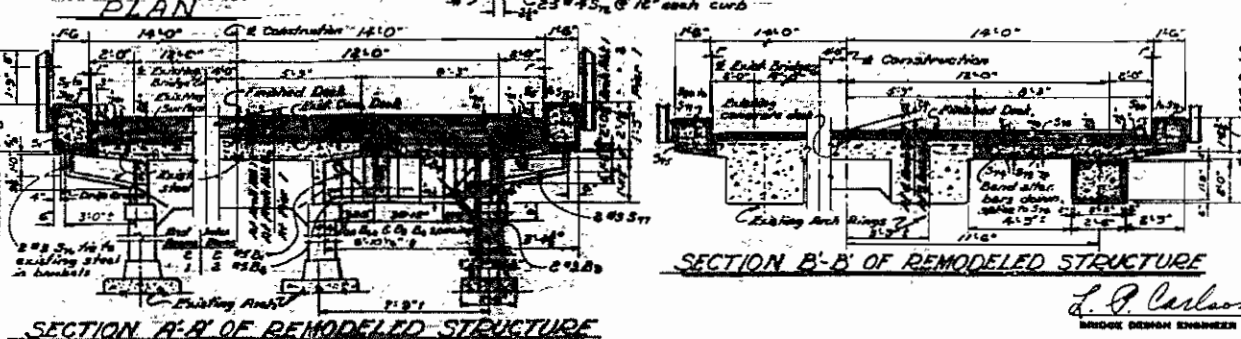
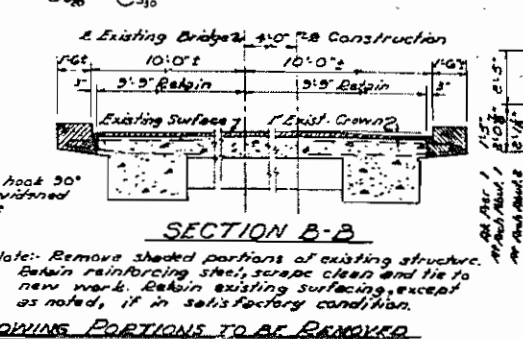
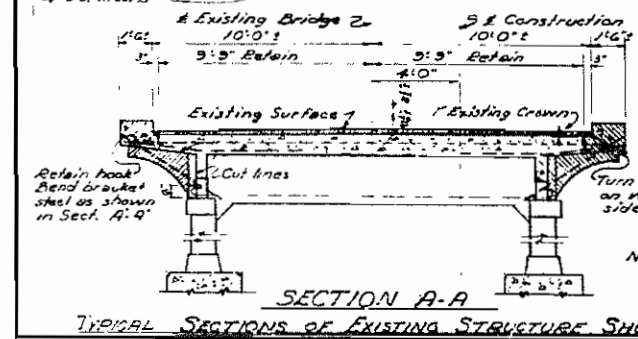
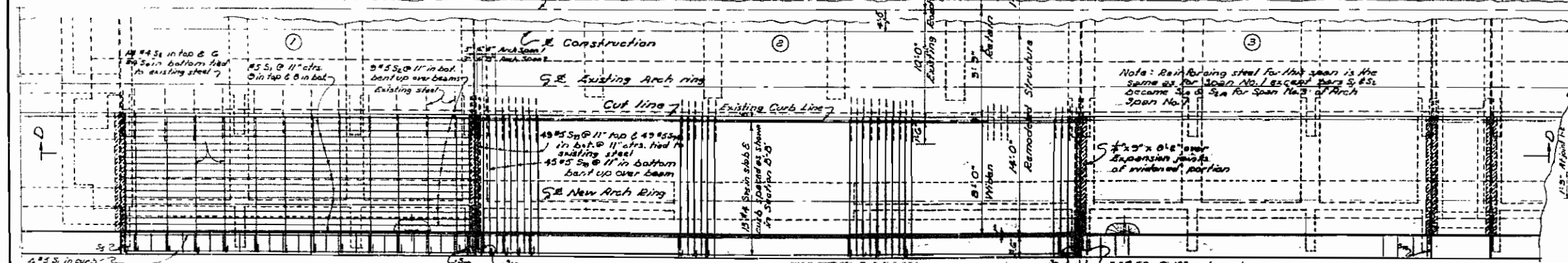
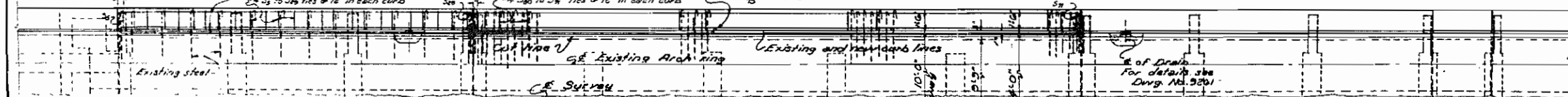
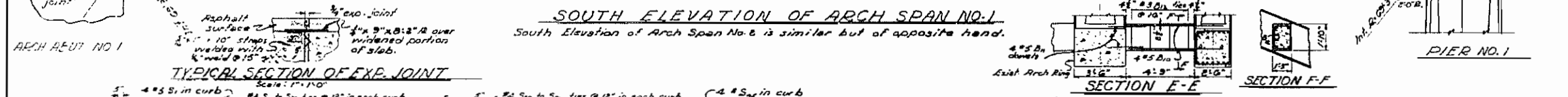
L.P. Carlson
 BRIDGE DESIGN ENGINEER

FED. ROAD DIST. NO.	STATE	FED. AID PROJECT NO.	FISCAL YEAR	SHEET NO.	TOTAL SHEETS
6	ARK.	1-022-103		49	161
JOB NO.			4-42G		

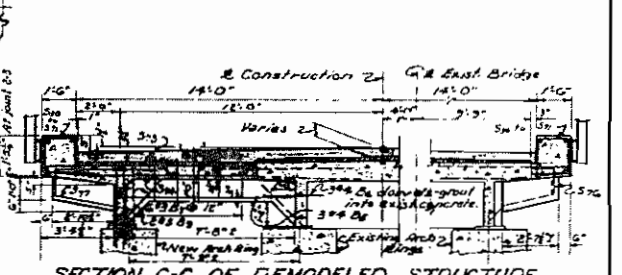


BAR LIST FOR ARCH SPANS NO. 1 & 2

Location	Bar No.	Size	Length	Span	Notes
Arch Spans	A1	#5	14	35'-3"	
Arch Spans	A2	#5	6	30'-0"	
Arch Spans	A3	#5	8	40'-0"	
Arch Spans	A4	#5	14	32'-0"	
Arch Spans	A5	#5	16	31'-3"	
Arch Spans	A6	#5	16	31'-3"	
Arch Spans	A7	#5	16	31'-3"	
Arch Spans	A8	#5	16	31'-3"	
Arch Spans	A9	#5	16	31'-3"	
Arch Spans	A10	#5	16	31'-3"	
Arch Spans	A11	#5	16	31'-3"	
Arch Spans	A12	#5	16	31'-3"	
Arch Spans	A13	#5	16	31'-3"	
Arch Spans	A14	#5	16	31'-3"	
Arch Spans	A15	#5	16	31'-3"	
Arch Spans	A16	#5	16	31'-3"	
Arch Spans	A17	#5	16	31'-3"	
Arch Spans	A18	#5	16	31'-3"	
Arch Spans	A19	#5	16	31'-3"	
Arch Spans	A20	#5	16	31'-3"	
Arch Spans	A21	#5	16	31'-3"	
Arch Spans	A22	#5	16	31'-3"	
Arch Spans	A23	#5	16	31'-3"	
Arch Spans	A24	#5	16	31'-3"	
Arch Spans	A25	#5	16	31'-3"	
Arch Spans	A26	#5	16	31'-3"	
Arch Spans	A27	#5	16	31'-3"	
Arch Spans	A28	#5	16	31'-3"	
Arch Spans	A29	#5	16	31'-3"	
Arch Spans	A30	#5	16	31'-3"	
Arch Spans	A31	#5	16	31'-3"	
Arch Spans	A32	#5	16	31'-3"	
Arch Spans	A33	#5	16	31'-3"	
Arch Spans	A34	#5	16	31'-3"	
Arch Spans	A35	#5	16	31'-3"	
Arch Spans	A36	#5	16	31'-3"	
Arch Spans	A37	#5	16	31'-3"	
Arch Spans	A38	#5	16	31'-3"	
Arch Spans	A39	#5	16	31'-3"	
Arch Spans	A40	#5	16	31'-3"	
Arch Spans	A41	#5	16	31'-3"	
Arch Spans	A42	#5	16	31'-3"	
Arch Spans	A43	#5	16	31'-3"	
Arch Spans	A44	#5	16	31'-3"	
Arch Spans	A45	#5	16	31'-3"	
Arch Spans	A46	#5	16	31'-3"	
Arch Spans	A47	#5	16	31'-3"	
Arch Spans	A48	#5	16	31'-3"	
Arch Spans	A49	#5	16	31'-3"	
Arch Spans	A50	#5	16	31'-3"	
Arch Spans	A51	#5	16	31'-3"	
Arch Spans	A52	#5	16	31'-3"	
Arch Spans	A53	#5	16	31'-3"	
Arch Spans	A54	#5	16	31'-3"	
Arch Spans	A55	#5	16	31'-3"	
Arch Spans	A56	#5	16	31'-3"	
Arch Spans	A57	#5	16	31'-3"	
Arch Spans	A58	#5	16	31'-3"	
Arch Spans	A59	#5	16	31'-3"	
Arch Spans	A60	#5	16	31'-3"	
Arch Spans	A61	#5	16	31'-3"	
Arch Spans	A62	#5	16	31'-3"	
Arch Spans	A63	#5	16	31'-3"	
Arch Spans	A64	#5	16	31'-3"	
Arch Spans	A65	#5	16	31'-3"	
Arch Spans	A66	#5	16	31'-3"	
Arch Spans	A67	#5	16	31'-3"	
Arch Spans	A68	#5	16	31'-3"	
Arch Spans	A69	#5	16	31'-3"	
Arch Spans	A70	#5	16	31'-3"	
Arch Spans	A71	#5	16	31'-3"	
Arch Spans	A72	#5	16	31'-3"	
Arch Spans	A73	#5	16	31'-3"	
Arch Spans	A74	#5	16	31'-3"	
Arch Spans	A75	#5	16	31'-3"	
Arch Spans	A76	#5	16	31'-3"	
Arch Spans	A77	#5	16	31'-3"	
Arch Spans	A78	#5	16	31'-3"	
Arch Spans	A79	#5	16	31'-3"	
Arch Spans	A80	#5	16	31'-3"	
Arch Spans	A81	#5	16	31'-3"	
Arch Spans	A82	#5	16	31'-3"	
Arch Spans	A83	#5	16	31'-3"	
Arch Spans	A84	#5	16	31'-3"	
Arch Spans	A85	#5	16	31'-3"	
Arch Spans	A86	#5	16	31'-3"	
Arch Spans	A87	#5	16	31'-3"	
Arch Spans	A88	#5	16	31'-3"	
Arch Spans	A89	#5	16	31'-3"	
Arch Spans	A90	#5	16	31'-3"	
Arch Spans	A91	#5	16	31'-3"	
Arch Spans	A92	#5	16	31'-3"	
Arch Spans	A93	#5	16	31'-3"	
Arch Spans	A94	#5	16	31'-3"	
Arch Spans	A95	#5	16	31'-3"	
Arch Spans	A96	#5	16	31'-3"	
Arch Spans	A97	#5	16	31'-3"	
Arch Spans	A98	#5	16	31'-3"	
Arch Spans	A99	#5	16	31'-3"	
Arch Spans	A100	#5	16	31'-3"	



NOTES
 For General Notes see Dwg. No. 9260.
 Concrete to be Class 25 and Class 5 as noted.
 For Details of Arch Abutments see Dwg. No. 9255
 For Details of Pier see Dwg. No. 9257



DETAILS FOR WIDENING
B.C. ARCH SPANS NO. 1 & 2
BRIDGE OVER BIG VACHE GRASSE CREEK
CAMP CHAFFEE - FRANKLIN COUNTY LINE RECONSTR.
SEBASTIAN COUNTY
 ROUTE 22 SEC. 1
 ARKANSAS STATE HIGHWAY COMMISSION
 LITTLE ROCK, ARK.
 DRAWN BY: J.E.H. DATE: 10-10-55
 TRACED BY: DATE: 10-21-56
 CHECKED BY: J.E.M. DATE: 10-21-56
 BRIDGE NO. 349A DRAWING NO. 9262